

# Atlantis

HYDROTEC

## FTTH Home-Drop Solution



Faster  
Install



Minimum  
Disruption



Cheaper



Environmentally  
Friendly



**CRALEY Group**  
Innovators in  
Smart Infrastructure



**Atlantis Hydrotec®**

HOME-DROP KITS

Home-Drops  
Made Easy



## A simple solution for fast, cost-effective home-drops

Suitable for use in Single Dwelling (SDU) or Multi-Dwelling Units (MDU)



Suitable for SDUs



Suitable for MDUs



Fast Install



No Trenching Required



Safe to use



Approved & Certified



# Atlantis Hydrotec®

HOME-DROP KITS

Home-Drops Made Easy



Patented 'In-Pipe' Technology

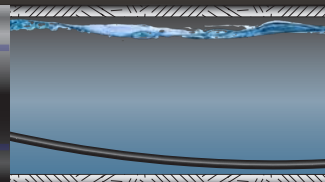
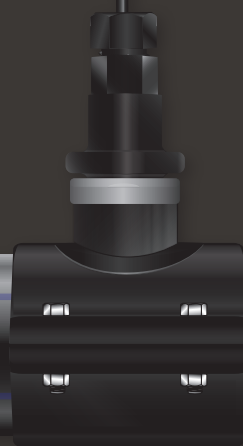
- ▶ A small-bore Messenger Pipe is installed within the customer's own water supply pipe
- ▶ The Messenger Pipe carries the fibre optic cable from the property boundary directly to the property itself, regardless of the distance
- ▶ No trenching required
- ▶ No risk of striking other services
- ▶ Minimal disruption for homeowners
- ▶ Particularly suitable for long distance drops

Internationally Approved and Certified

 **WRAS**  
WATER REGULATIONS ADVISORY SCHEME

 **NSF**  
Certified to NSF/ANSI 61

 **NSF**  
Certified to NSF/ANSI 372



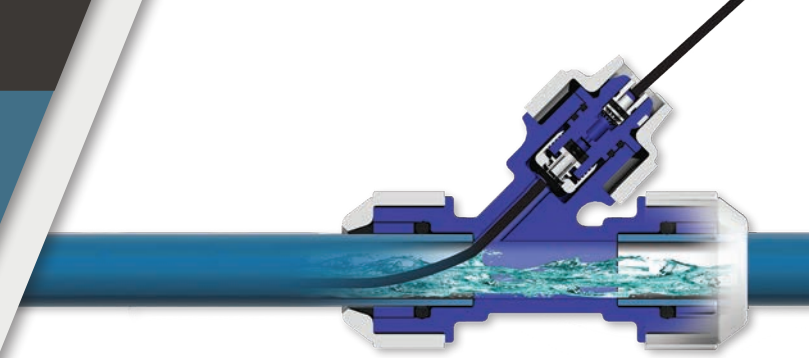


The Atlantis Hydrotec® Home-Drop Kit uses the property's water supply pipe as a pre-existing conduit.

- ▶ Takes the home-drop fibre from the street to the property
- ▶ In an MDU application, it takes the fibre from the pump room directly to each floor and then to each property
- ▶ Installs a hollow Messenger Pipe within the property's water supply pipe
- ▶ The fibre never comes into contact with the water
- ▶ No wayleaves or permits required

The Atlantis Hydrotec® Home-Drop Kit is suitable for use with any pipe size or material and interfaces with standard water industry fittings.

BETTER  
FASTER  
CHEAPER



## Why use Atlantis Hydrotec® Home-Drop Kits?

- ▶ Rapid installation and highly cost-effective
- ▶ Trench-less; meaning no damage to property and no-reinstatement required
- ▶ Minimal disruption to homeowner
- ▶ Particularly suitable for large plots with expensive surface finishes, ornate gardens and long run-lengths
- ▶ No potential for damaging other services i.e. gas and electricity
- ▶ Fully independent of the property's surface finish and terrain
- ▶ Suitable for single-dwelling or multi-dwelling applications
- ▶ International product approvals and certification means that it only requires the customer's consent to install; avoiding easement and right-of-way issues



The Atlantis Hydrotec® Home-Drop solution is a trench-less method that minimises the challenges experienced with traditional, civils-based installation techniques.

These traditional techniques can be highly-invasive and disruptive... as well as costly!

- ▶ Rapid installation with minimal work-force
- ▶ Easement and right-of-way issues are avoided
- ▶ No heavy machinery required

Using the Atlantis Hydrotec® Home-Drop solution provides significant benefits for the home-owner, the installation contractor and the service provider



# CRALEY Group's Integrated Solutions

At CRALEY Group, our message is 'Innovation in SMART Infrastructure' and our unique set of products are designed to provide significant advances on current techniques to provide better, faster and more cost-effective solutions.

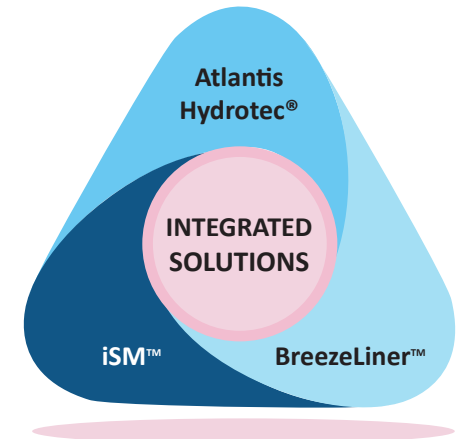
The whole suite of solutions have been designed to complement and integrate seamlessly with each other, creating a unique set of solutions specifically designed for trench-less pipeline management and communications; we call this integration our Internet-of-Pipes Platform™.

Atlantis Hydrotec® is a 'pipe-in-a-pipe' solution in which a special purpose, small-bore 'Messenger Pipe' is inserted into existing water pipelines or similar for the purposes of installing ultra-fast fibre optic communication cables.

iSM™ is a revolutionary solution that, once connected to an Atlantis Hydrotec® fibre optic installation, facilitates real-time in-pipe leak detection with unparalleled sensitivity and location accuracy.

BreezeLiner™ enables the fast and cost effective re-lining of waste-water ducts, at the same time installing fibre cable into the infrastructure.

The BreezeLiner™ solution uses a new and patented technique for pipe re-lining: LIPP™ (Laminate in Place Polymer), and offers a radical, lower cost, quicker to install and greener alternative to traditional Cured in Place Polymer (CIPP) systems using chemical resins with hot water, steam or UV curing.



**Atlantis**  
HYDROTEC

**iSM**

**BreezeLiner**





**CRALEY Group**

Innovators in  
Smart Infrastructure



European Headquarters:

CRALEY Group Europe S.L.  
Carrer Moli d'en Saborit  
2 - Edifici Auditorium, Oficina 4.2  
08500 Vic (Barcelona)

T: +34 931 315 633

E: [office@craley.com](mailto:office@craley.com)

W: [www.craley.com](http://www.craley.com)

© CRALEY Group Limited, a UK registered company: 08475341.

CRALEY Group Europe S.L. is a trading subsidiary registered in Spain: B67058214